

THE CITY UNIVERSITY OF NEW YORK FY 2007-08 to FY 2011-12 CAPITAL BUDGET REQUEST

CUNY is the Nation's largest urban university, comprised of 11 senior colleges, 6 community colleges, an honors college, a graduate school, a graduate school of journalism, a law school and a school of biomedical education. More than 223,000 students are enrolled in degree credit courses, and another 252,000 are enrolled in adult and continuing education courses at campuses located in all New York City boroughs.

CUNY traces its beginnings to the founding in 1847 of the Free Academy, which later became The City College of New York, the first CUNY College. According to New York State Education Law, CUNY is "supported as an independent and integrated system of higher education on the assumption that the university will continue to maintain and expand its commitment to academic excellence and to the provision of equal access and opportunity for students, faculty and staff from all ethnic and racial groups and from both sexes." The law requires CUNY to "remain responsive to the needs of its urban setting and maintain its close articulation between senior and community college units."

The facilities at CUNY's 21 modern campuses throughout the five boroughs of New York City include the traditional and the innovative. More than 290 buildings with 26 million square feet of space include state-of-the-art computer centers, science and language laboratories, gymnasiums, theaters, greenhouses, astronomy observatories, and many more features. The Baruch College William and Anita Newman Vertical Campus on East 25th Street is the largest vertical campus facility in the city—approximately 775,000 gross square feet. The College of Staten Island's bucolic 204-acre park-like campus is the largest college campus in New York City. The York College campus is the site of the \$85 million Food and Drug Administration's Northeastern Regional headquarters, where students are offered opportunities for study and internships.

This document is the University's Capital Budget Request for the five-year period of FY 2007-08 through FY 2011-12. This Capital Building Program was developed by the Office of Facilities Planning, Construction and Management in consultation with the colleges. This capital building program represents the University's capital needs as identified by a broad body of University constituencies. The projects requested emanate from approved college master plans and from ongoing condition assessments of the existing building stock. This five-year plan includes funding for projects already started as well as new construction. The images on the following pages illustrate a sample of projects identified within this Capital Budget Request.

**Advanced Science Research Center Phase I
City College New Science Building**

City College South Campus

Architect: Flad & Associates / Kohn Pedersen Fox Associates

CUNY-Wide Advanced Science Research Center

Phase I of the CUNY-Wide Advanced Science Research Center (ASRC) project will construct a new 189,000 GSF shared research facility to support the concept of an integrated university by providing state-of-the-art laboratories for the University's top research faculty in one location. The research performed in the ASRC will incorporate technology in the areas of nanoscience, photonics, and bio-sensing.

City College Science Building

City College's Science Division currently occupies facilities that cannot be cost-effectively renovated to support research at the College. The New Science Building will address this need by providing an additional 200,000 GSF of research space. The building will be designed and constructed in tandem with the ASRC; the two facilities will be separate entities with shared core science facilities and amenities.

A Project Labor Agreement (PLA) with a Guaranteed Maximum Price (GMP) will be used on this project instead of Wick's Law. Design is nearly complete and construction start is scheduled for March 2007 with a planned occupancy for Fall term 2009.



Rendering of ASRC Phase I (left) and CCNY New Science Building on the right.

William E. Macaulay Honors College

Facilities Acquisition



In September 2006, philanthropist, financial advisor and investment manager William E. Macaulay, a 1966 graduate of The City College of New York, presented the University with the largest gift in its history for the Honors College. The \$30 million gift will be used to create an endowment to support the programs and operations of the Honors College in perpetuity. A portion of the gift was used to purchase a 23,500 GSF building at 35 West 67th Street in Manhattan. The building program will include seminar rooms, a large lecture hall, administrative offices, study areas and student spaces. The William E. Macaulay Honors College will open in Fall 2007.

Baruch College

Master Plan

Architect: FXFOWLE Architects



Lawrence & Eris Field Building (17 Lexington Ave)

Baruch's facility at 17 Lexington Avenue was built in 1929 and has had intensive use since its construction. The 1986 Master Plan Amendment proposed a total renovation of this facility to accommodate academic programming changes. An amendment to the 1986 Master Plan is underway. This amendment will provide an updated program for this building and an overall plan for the most efficient use of its facilities resources.

Brooklyn College

Roosevelt Hall Renovation

Architect: FXFOWLE Architects



The phased renovation of Roosevelt Hall and Roosevelt Hall Addition will provide for the consolidation and relocation of departments to achieve master plan academic goals. These spaces will include classrooms and high-tech science labs. Additionally, the scope of this project includes improvements to the adjacent athletics fields.

City College

Marshak Building

Architect: Ahuja Priya Architects



Rendering of new façade for Marshak

The Marshak Building, which primarily houses City College's sciences and athletic facilities, will receive structural and mechanical infrastructure upgrades. This building will be reprogrammed under this project.

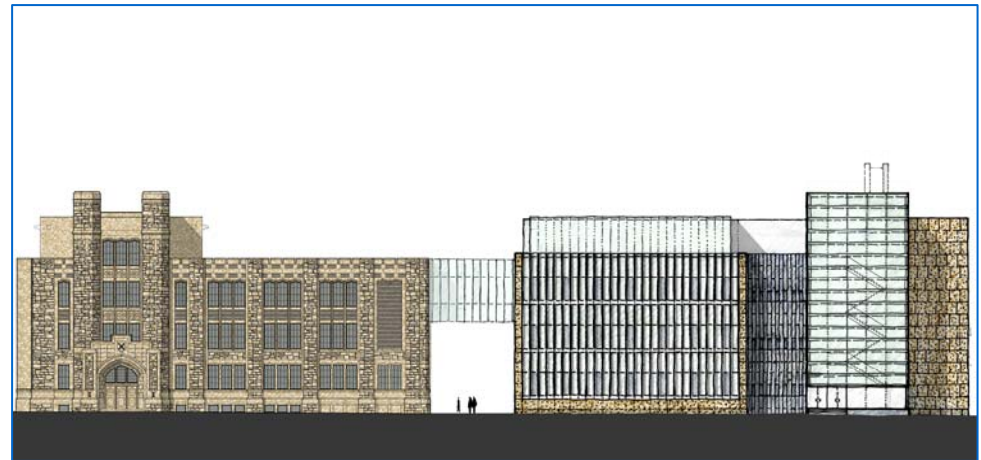
John Jay College of Criminal Justice
Building Expansion Project
Architect: Skidmore Owings Merrill LLP



Conceptual view of expansion from 11th Avenue

A new academic facility will be built adjoining the College's Haaren Hall Building, to create a unified college campus on one city block. The 625,000 GSF addition will contain classrooms and lecture halls, laboratories, faculty offices, an instructional resource center, and student/faculty lounges. Construction start is projected for early 2007 with occupancy planned for Summer 2010.

Lehman College
New Science Facility
Architect: Perkins + Will



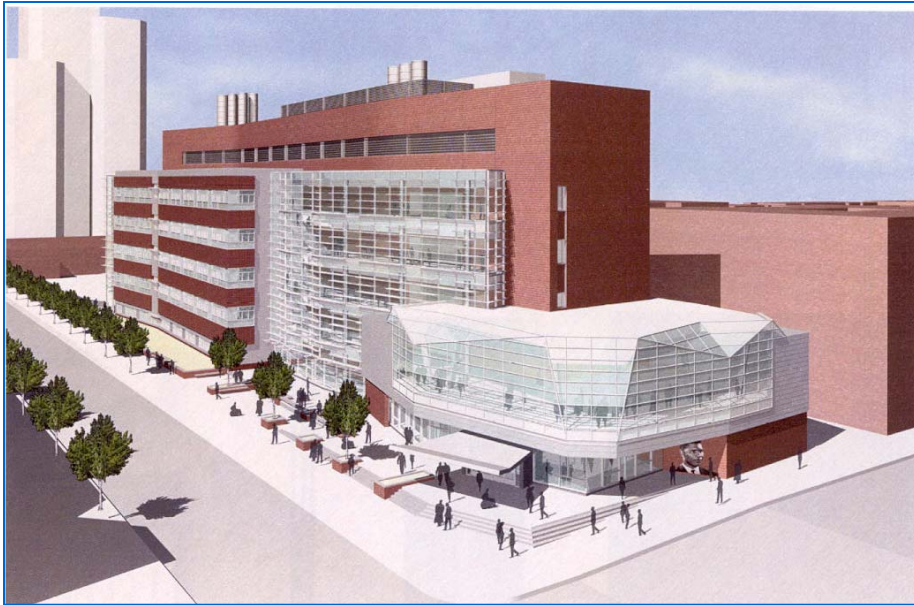
Gillet Hall (left) and the New Science Facility Phase I

This project will create a modern science facility of a combined 185,000 GSF that will include laboratories for teaching and research, science learning centers, offices, and a research facility. The fully-funded Phase I will construct approximately 55,000 GSF. Design is underway with construction start planned for October 2007.

Medgar Evers College

Academic Building I

Architect: Polshek Partnership LLP & Roberta Washington Architects



This new 194,000 GSF building will provide Medgar Evers College with a complete range of state-of-the-art instructional spaces, faculty offices and support facilities. Abatement and demolition work are underway. Anticipated occupancy of the new building is Spring 2010.

New York City College of Technology

Academic Building I

Architect: Renzo Piano Building Workshop and Perkins Eastman Architects



Conceptual Rendering of Academic Building I entrance and massing of the site

NYCC Tech's Master Plan calls for Klitgord Hall to be demolished to make way for a mixed use facility. A public/private development partnership is being pursued with Forest City Ratner in an effort to leverage available real estate resources to support this project. The new 262,000 GSF NYCCT facility will include instructional, athletic and assembly spaces.

Queens College

Science Upgrades – Remsen Addition

Architect: Mitchell Giurgola Architects



Rendering of planned addition to Remsen Hall

This project will begin to address the College's science facilities needs. Phase I will construct a 26,000 GSF addition to Remsen Hall to house the College's chemistry labs. Vacated space will then be renovated to house some of the less infrastructure-intensive chemistry uses. Anticipated construction start is January 2007 with completion planned for February 2009.

York College

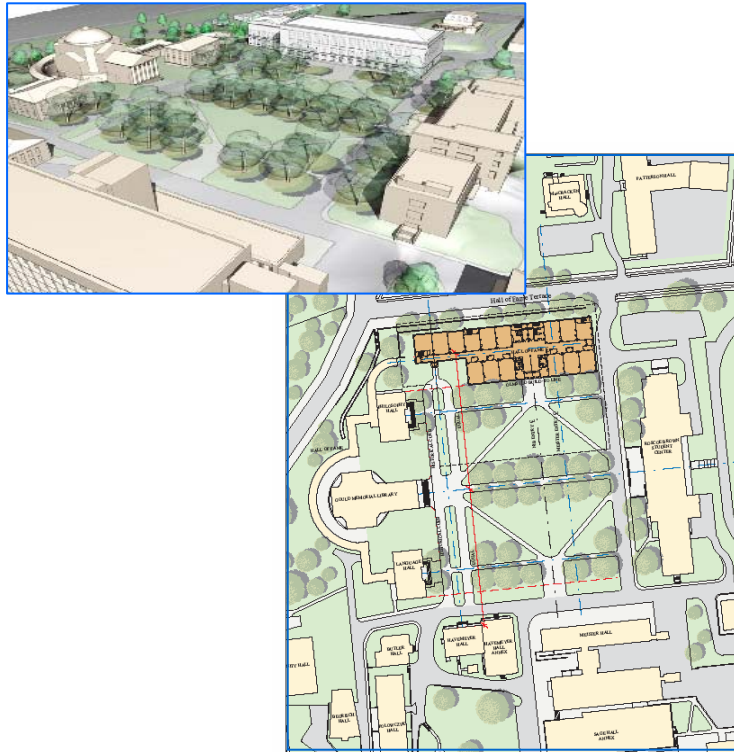
Academic Core Building Improvements

Architect: To be selected



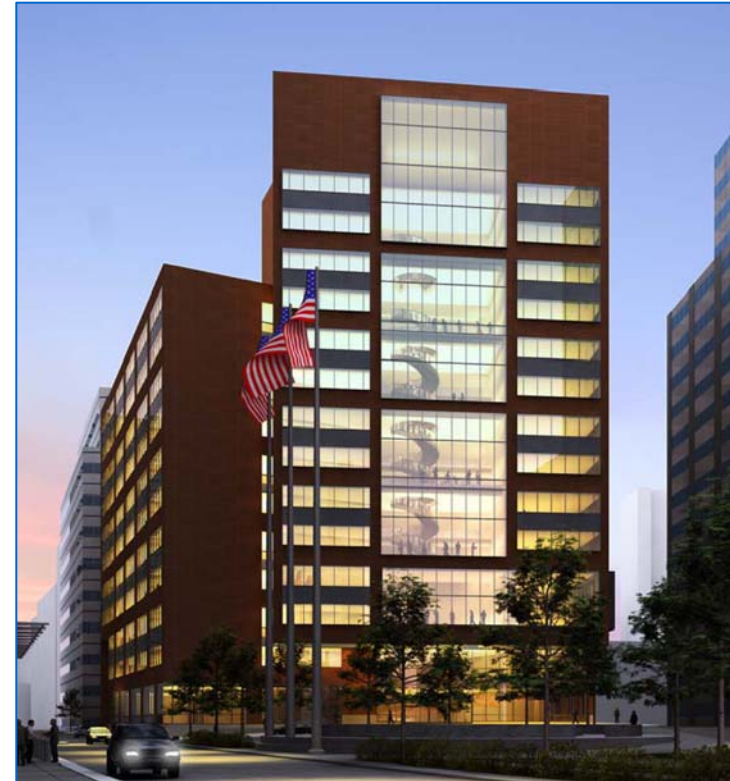
The Academic Core Building is the center of activity on campus. It is currently comprised of both instructional and administrative spaces, which include student services. The project will renovate existing space in response to changing academic needs of the institution and create a better integrated, more student-friendly campus. A Master Plan is to begin in late 2006 that will define the space and cost estimate of this project.

Bronx Community College
North Instructional Building
Architect: Robert A.M. Stern Architects



A new, 92,000 GSF facility will be constructed at Bronx CC that will house instructional spaces, a new library, and support areas. The new building, as shown in these renderings, will complete the north quadrangle of the campus. Design started in February 2006 and construction start is planned for August 2008 with an anticipated duration of 24 months.

Borough of Manhattan Community College
Fiterman Hall Replacement
Architect: Pei Cobb Freed & Partners Architects LLP



Rendering of new Fiterman Hall

The original Fiterman Hall was irreparably damaged on September 11, 2001. This project will construct a new, mixed-use 377,000 GSF replacement facility that will include instructional and support space.

LaGuardia Community College

Center 3 Master Plan

Architect: Helpern Architects



Preliminary Conceptual Section of Center 3 as per Master Plan

Renovation of the Center 3 Building for college functions is to be phased as funding becomes available. Phase I, recently completed, provides a new "One Stop Shop" Student Services Center. Phase II will upgrade the building's infrastructure, including vertical transportation and mechanical systems, along with further development of program spaces.

Queensborough Community College

Holocaust Center

Architect: Thanhauser Esterson Kappell Architects



Rendering of future Holocaust Center

The Holocaust Center at Queensborough has outgrown its current space. This project will provide a 7,000 GSF addition to the College's Administration Building that will contain expanded exhibition space and house the Holocaust Center's library collection.